

2019 5! 28"#\$%&'(
)+, 2019 -.01).23
456+7289;=> 2019
6! 27"?@AB6 20CDEFG
HIJKLMNO 2019 01).
23PQRSTU9:WXYZ
[#R801P\238UV]^_
`aBb[cdefg<hijkl
%mnOP\6pqrs8tuvw
xyz{|~
P\238* !"# { \$%&
45 '() n/0 * &] +, .\
- vw . +? /01 80 * & \$.
\ 234 6Z 5678 8+ %< 9(
[#80 * &|N :;<= ?t >
0 *? 8H @8 AB X C.\ DE ?
FGHI / JK- t L H @8 AB X
C.\ Mn N 0.28-0.30 O /kwh 2

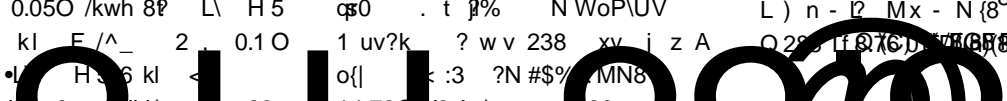
3 ?/AB X C.\ N 0.40 /kwh P
+ 8H @?GQR /RS /TU /VS /
IW- ?Mn XY , ZL H @<
[\ 8 +, X C.\ \$]AB
X C.\ 23 8 ^_ I P^a6 P\
bcd3 <5e 8P\ bcd3 ?fg
ZP\23 h 6 5E 8PQR.\ i
jkl < mn #\$\$%' opqrs
8.\xy[# ij ?m-ij .\ =
+, X C.\ -]\AB X C.\
- qr X t E 0.05/kwh u 0.15 O
/kwh2 vh 6P\ bcd3 q82
3? wxyP5E 8UV\ zN [#
23 ij{|kl <

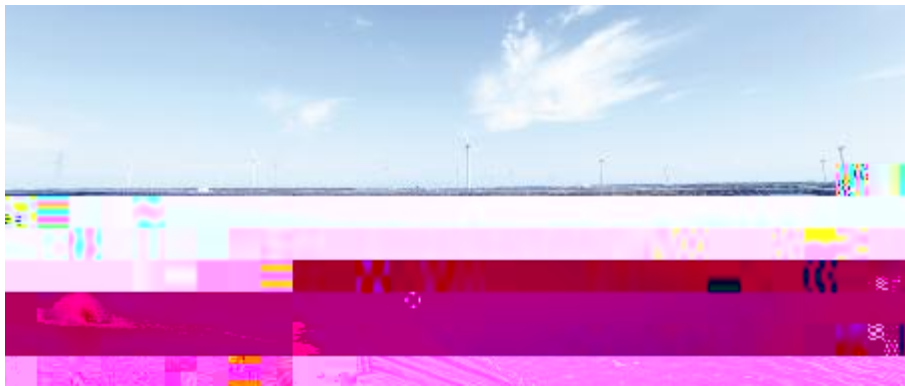
)-L /ZL &H @1\$!
0 * & k\ H8 "# H@P \$ h
6p ? . %&' 8H @EFG (SU
) / * UU) / (+\$+ U , D -\ 2
j - . p k _83X23e)H @?m
I P / 6p e . 01 I P / 6 5e 8
" * 234 x /N 56 8*) n 7
8 bu I P V 9 5 6PQ %8\ z ? :
31 I P ; < t = 823* !" <
+ ?! P >? Gb @A R B } 4 C 0
0 TD 0.12 Tc (@P) Tj /F1+3 8.88 Tf 18 0 TD (\$ Tj /F1*64 0 TD24166 Tc (40)Tj /F< T28134 0 TD!-0.24 TF1*8 0 TD(Ch) Tj /F18 824ABTz (@P) Tj /F1+3 8.88 Tf 18
" (* & . %& (!) Tj /F1+3 8.88 Tf 18 0 TD (\$ Tj /F1*64 0 TD24166 Tc (40)Tj /F< T28134 0 TD!-0.24 TF1*8 0 TD(Ch) Tj /F18 824ABTz (@P) Tj /F1+3 8.88 Tf 18
\ H \$ t L\ H 23 8 AB X C.\ m4) ij , 2019 i , 8nop \$ HF \ GHI \$ J / - K XY /
^_ HI 0.05O /kwh 8P L\ H 5 q0 . t ?% N W o P U V L) n - P Mx - N { 8.88 Tf 8 HI
h 6P\ kl E / ^ _ 2 . 0.1O 1 uv?k ? wv 238 xy j z A Q295 I 876D W (8855810018649.800078.860)DF1
/kwh 8? ! H 6 kl < o{| : 3 ?N # \$ % MN8

[# [Dg Mn[] { hB \$ n
oP\UV823 - 2019 i , \$
; + m23 !" xy '(R8^ <<

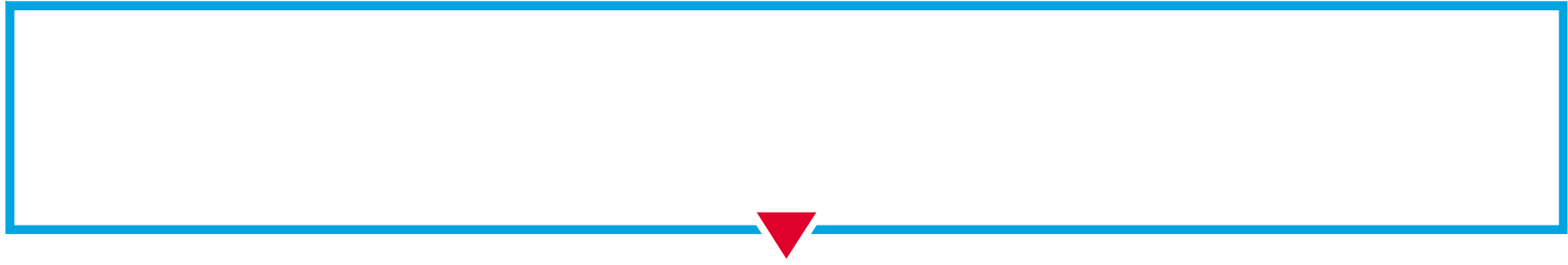
1 8^\ :: ? N # \$ % & ') N 8
2018 8 \$ % ^ V (1 ?) ^ 6 *
+ H @ 8 \ H N 89 6 , - / 0 K
1 VW s 23 (^ L 4 J 423? 1
I- 5*+ H @s N Z u f u 6 8 {
.8 78 < 9: J { O a\ H
@8 { .!%R P \$ { .8 . F 8 M
; + m23 !" xy '(R8^ <<

\$ HF \ GHI \$ J / - K XY /
L) n - P Mx - N { 8.88 Tf 8 HI
Q295 I 876D W (8855810018649.800078.860)DF1





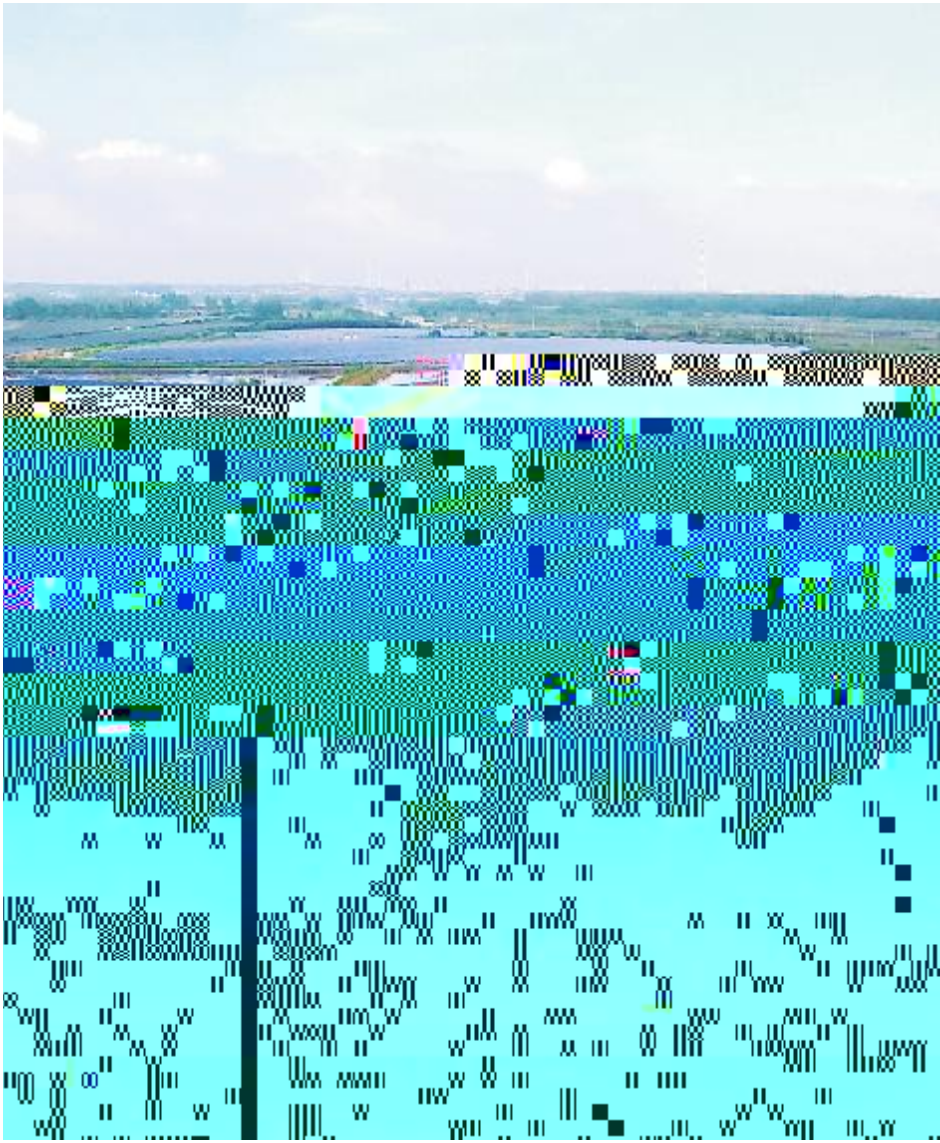
#\$QRS*?'@A#G



! " # \$ % & ' ()
* + , - . / 0 1 2 3 4 5
6 \$ 7 8 9 : ; < = > ?
@ A B C D E F : ; B C G
H I J K L M



'(" # \$ % & ' () * + NOP



#\$bed'@A#G

\$%

N, C#\$ a ?i yzV?, N\ 8 c /
{ | :;P \$ } \ 0 - <+ | { | :;P \$ } \
:: L, • \ 0 † O6 _ \ / ~ \ ,9 \$3 • 9 ,
J 0 } /e3 < # \$ i B4> ! & N 50-60cm
G! ?b C " Bk5 C! ! to Fe Y 3 a
! & O k 1.3-1.5m?iD b A G! E lt
k Mo! ? b o O6 20-40cmu UV k! 0 8
1/4 G! < 3 f , N! # ^ I ?Y• I e 3 4]
J 0 U 1! # ? \ \$ % & 8 q 0 - ' !) ! R
/ (< N 8!) k 9! 23 ? * + 8 3 B 3 f
\ U A 8 (, / (- 5 . ' (? (> , \ / -
\ < x ! 3 O ? N x ! _ ? 8 8 0 3 P + 8 .
, ? (> / O W 1 x Y U V <

&' (

= B' % \ U I R s ; ? S A ! Y / W X /
pH / I 2 3 4 / Z [] B ^ 5 - • X < N e Y
a _ b _ y + e k) O X g ? 4 > ! 1 W X N
3mg/L P + < b 6 1-2 C! 8 7 b 8 & 9 to?
5 C! k t C! n 8 to 8 0 (G k / E M L !
: u C ; # C k - ? 3 R < L a ! R < 4 > U

V pH N 7-8.5 23 ? Z [E NH4+-N L =
0.2mg/L? | 2 3 4 E NO2--N L = 0.01mg/L? B
^ E S2-L = 0.001mg/L < 5 3